

19 Greenford Avenue, Hanwell, London, W7 1LD  
020 8567 3219



**Leasehold / Apartment**

## 66a, Drayton Bridge Road

### £445,000

An exceptionally well presented, two double bedroom apartment set over two floors which is well located within a few minutes walk of Hanwell Elizabeth Line station.

- First Floor Apartment
- Two Double Bedrooms
- Superbly Presented
- Fitted Kitchen
- Stylish Bathroom
- Large Reception Room
- Gas Central Heating
- Double Glazing
- Long Lease





**Leasehold / Apartment**

# Drayton Bridge Road, W7 1EP

## £445,000

This bright and spacious first floor apartment is superbly presented throughout in smart modern decor.

The accommodation is split over two levels and features two double bedrooms, a well fitted and equipped kitchen, a large reception room plus a modern bathroom.

Benefiting from gas central heating, full double glazing and including the security of a long lease and low outgoings, in our opinion this property would make an ideal first home.

Conveniently located on the south side of this wide tree lined road, immediately served by regular bus services and within a few minutes walk from Hanwell Elizabeth Line station. An array of local shops, eateries and bus routes are available on Greenford Avenue plus the green open spaces of Brent Valley (Bunny) park and golf course are close by. The area is well placed for highly regarded schools.



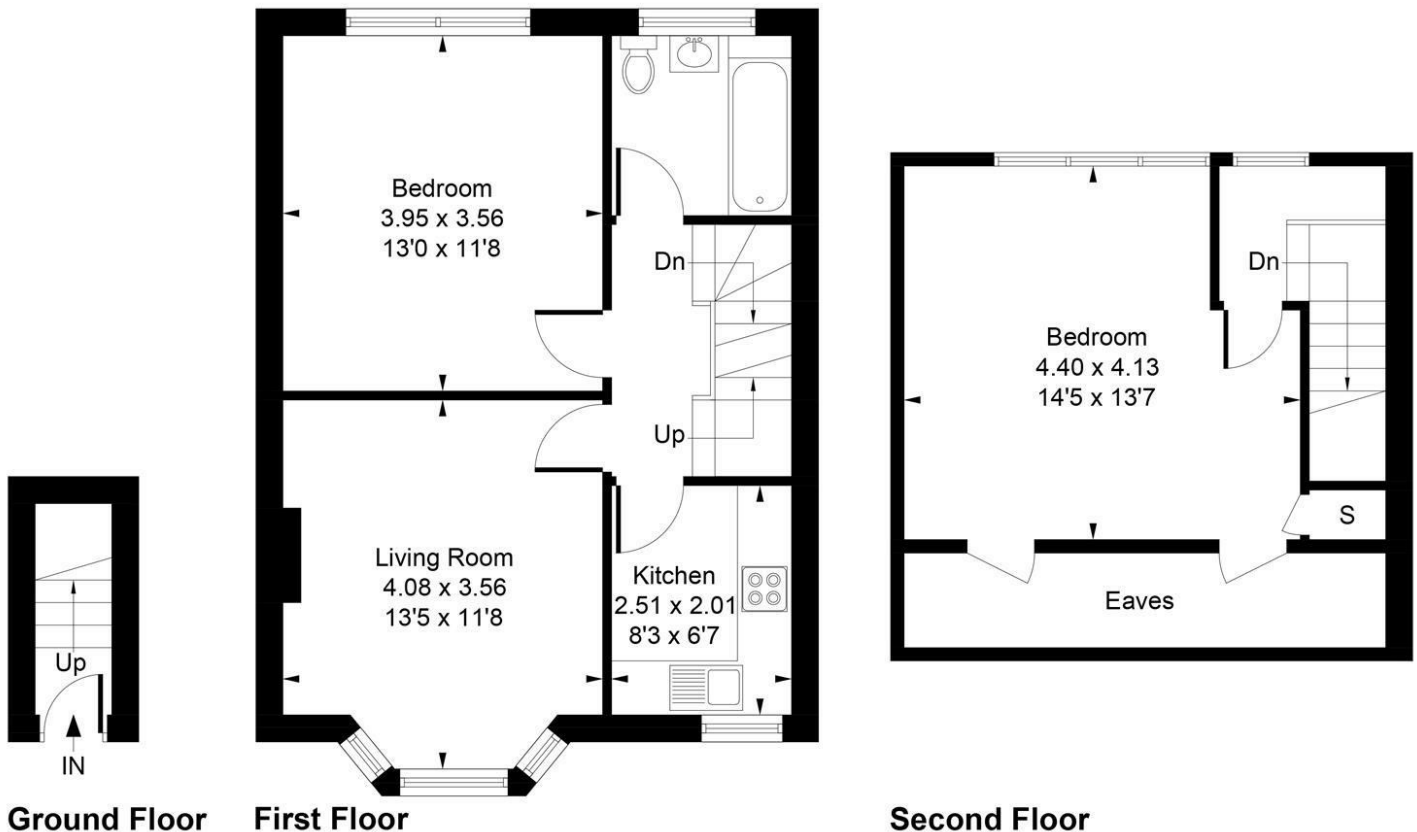


19 Greenford Avenue, Hanwell, London, W7 1LD  
020 8567 3219



## 66 Drayton Bridge Road, W7 1EP

Approximate Gross Internal Area = 67.9 sq m / 731 sq ft  
(Excluding Eaves)



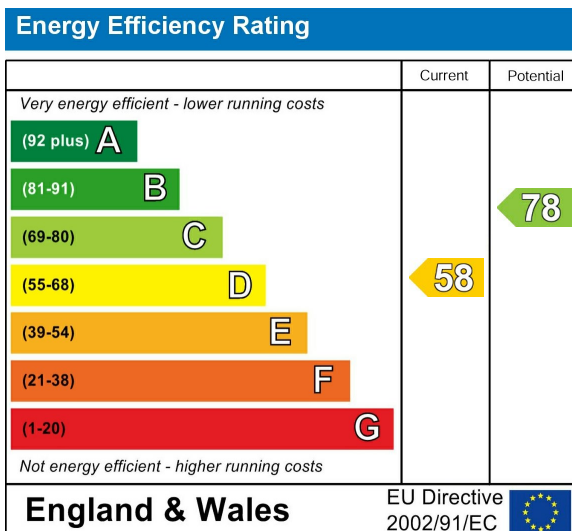
Whilst every attempt has been made to ensure the accuracy of the floor plan contained here, measurements of doors, windows, rooms and any other items are approximate and no responsibility is taken for any error, omission, or mis-statement. This plan is for illustrative purposes only and should be used as such by any prospective purchase.

Produced by [jcphotographystudio.com](http://jcphotographystudio.com)

Council Tax Band

C

Energy Performance Graph



Call us on

020 8567 3219

[hanwellsales@sintonandrews.co.uk](mailto:hanwellsales@sintonandrews.co.uk)

[www.sintonandrews.co.uk](http://www.sintonandrews.co.uk)

Agents Note: Whilst every care has been taken to prepare these particulars, they are for guidance purposes only. All measurements are approximate and are for general guidance purposes only and whilst every care has been taken to ensure their accuracy, they should not be relied upon and potential buyers are advised to recheck the measurements.